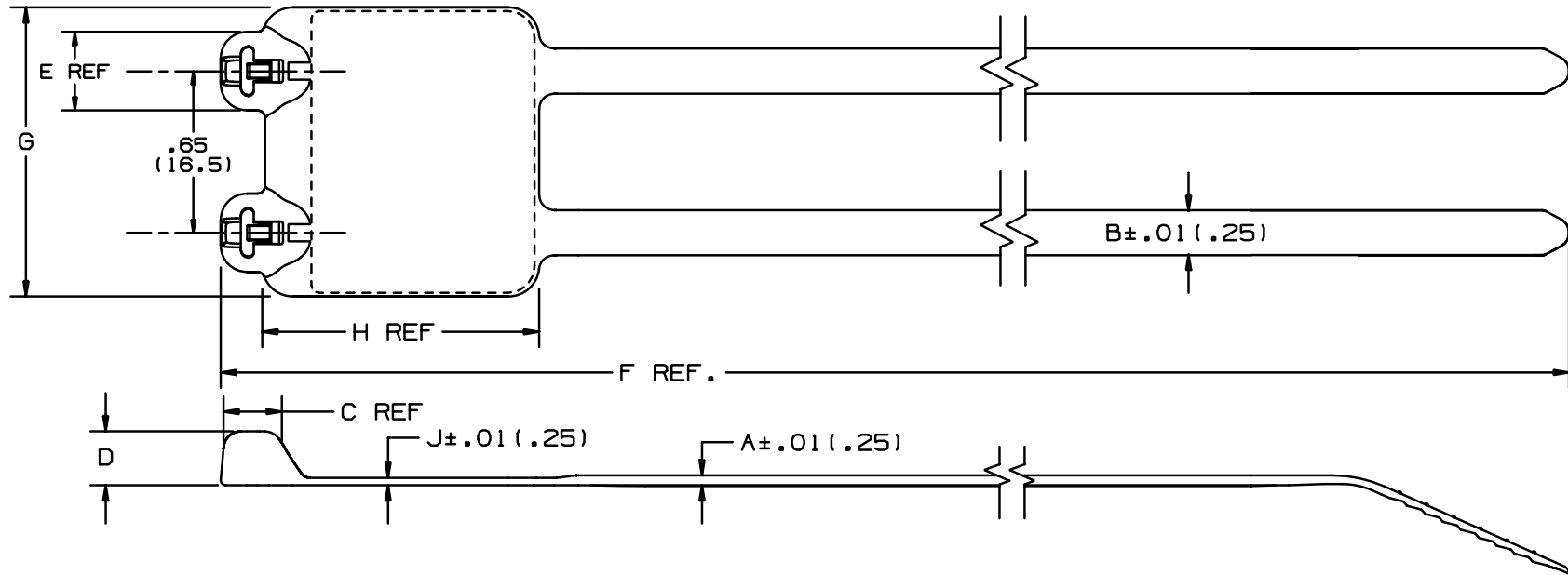


THIS COPY IS PROVIDED ON A RESTRICTED BASIS AND IS NOT TO BE USED IN ANY WAY DETRIMENTAL TO THE INTERESTS OF PANDUIT CORP.



PANDUIT * PART NO.	BUNDLE DIA.		A in (mm)	B in (mm)	C in (mm)	D in (mm)	E in (mm)	F in (mm)	G in (mm)	H in (mm)	J in (mm)	WRITE-ON AREA in. (mm)	MIN LOOP** TENSILE	CROSS- SECTION	WEIGHT
	MIN. in (mm)	MAX. in (mm)													
B2M2S	.37 (9.5)	2.00 (51)	.045 (1.2)	.185 (4.7)	.205 (5.2)	.220 (5.6)	.320 (8.1)	8.0 (203)	1.16 (29.5)	1.1 (27.9)	.032 (.81)	1.15 x .91 (29.2 x 23.1)	50 (222)	STANDARD	.65 (294)

NOTES:

- *1) SEE CURRENT PRICE SHEET FOR PART NUMBER SUFFIX DESIGNATION FOR PACKAGE SIZE AND PART COLOR.
- **2) LOOP TENSILE IS PER LEG OF STRAP.

DIMENSIONS IN PARENTHESES ARE IN METRIC UNITS

PANDUIT CORP. TINLEY PARK, ILLINOIS

BARB-TY MARKER TIE
BM SERIES

UNLESS OTHERWISE SPECIFIED,
DIMENSIONAL TOLERANCES ARE:
(.X) ± ---- (.XXX) ± .020 (.5)
(.XX) ± .02 (.5) ANGLES ± ---

UNLESS OTHERWISE SPECIFIED,
ALL DIMENSIONS ARE GIVEN
IN INCHES, THIRD ANGLE PROJECTION.

REV	DATE	BY	CHK	DESCRIPTION	ECN	R	CUST	SUP	DRAWN BY	DATE	MAT'L:	SCALE	DRAWING NO.	DWG SIZE
3	1-7-99	CJW		ADDED REF NOTE TO DIMENSIONS E, H, & C	0251	3			JABO	6/04/97	NYLON 6/6	NONE	BT-0251	A
2	11-13-98	CJW	JVL	ADDED WRITE-ON AREA	0251	2			JABO	6/04/97				
1	4-1-98	CJW	JVL	CHANGED THE MAX. BUNDLE DIA. 51mm WAS 50mm CHANGED G DIM. TO COMPLY WITH CONTROL DRAWING	0251	1			JABO	6/04/97				
R	6/04/97	JABO	JVL	DRAWING RELEASED	0251	R			JABO	6/04/97				
									JVL					